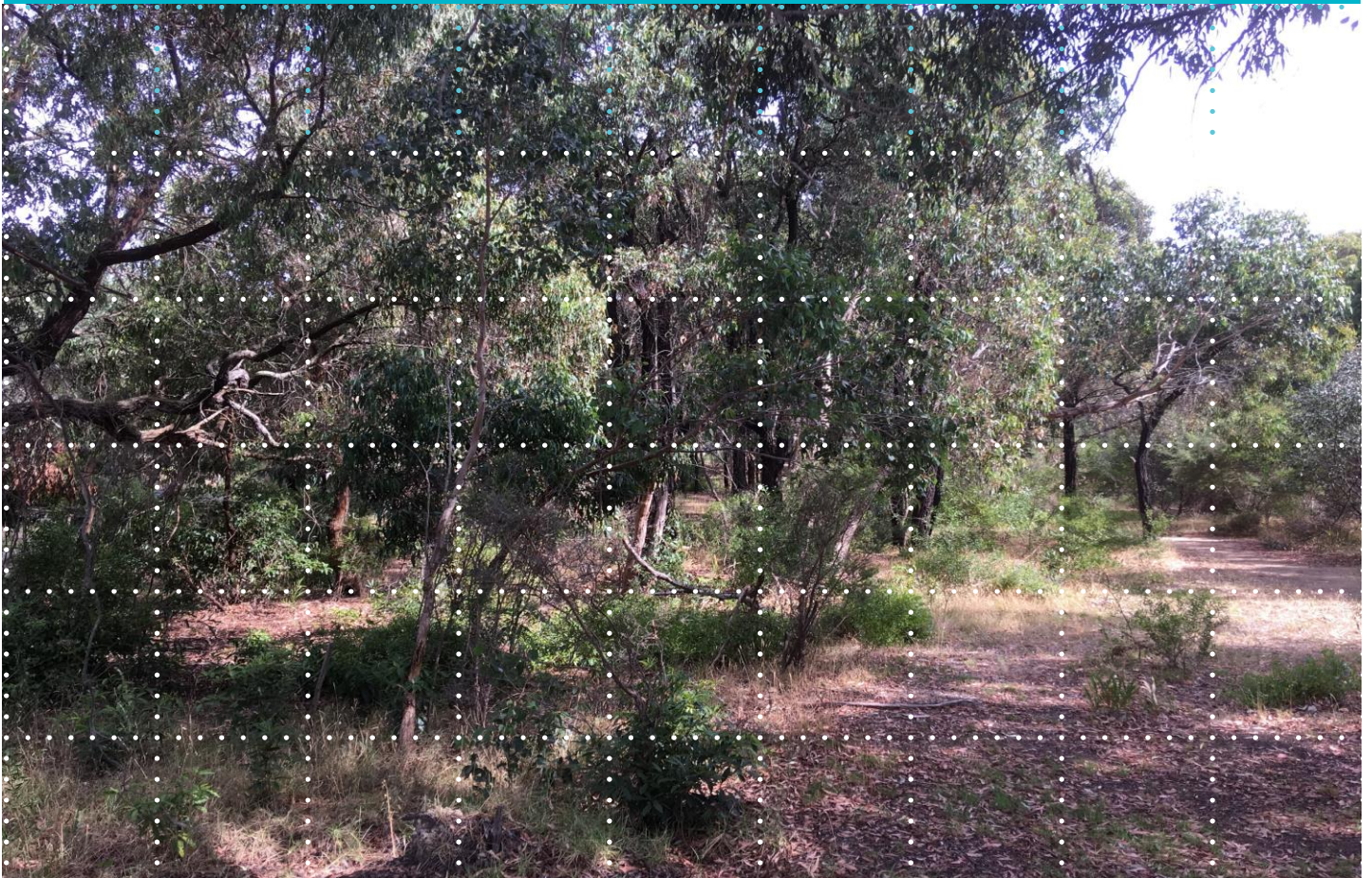


Final Report

Ecological Impact Desktop Assessment: Dromana Shared Path Project, Victoria

Prepared for
Mornington Peninsula Shire Council

June 2024



Ecology and Heritage Partners Pty Ltd

DOCUMENT CONTROL

Assessment type	Ecological Impact Desktop Assessment
Address	Dromana Shared Path Project, Victoria
Project number	17835
Project manager	Cat Stephenson (Associate Bushfire Consultant/Botanist)
Other EHP Staff	Madison Cassie (Ecologist)
Mapping	Diana Valadares (GIS Officer)
File name	17835_EHP_DromanaSharedPathProject_Final_21062024
Client	Mornington Peninsula Shire Council
Bioregion	Gippsland Plain
Catchment Management Authority	Melbourne Water
Council	Mornington Peninsula Shire Council

VERSION CONTROL

Report version	Comments	Report updated by:	Report reviewed by:	Date submitted
Draft	Report sent to the client for review	CS	AH	08/05/2024
Final	Report accepted by client	MC	AH	21/06/2024

🇺🇦 Ecology and Heritage Partners acknowledge the Traditional Owners of the country we live and work on, and we pay our respect to Elders past, present and emerging.

Copyright © Ecology and Heritage Partners Pty Ltd

This document is subject to copyright and may only be used for the purposes for which it was commissioned. The use or copying of this document in whole or part without the permission of Ecology and Heritage Partners Pty Ltd is an infringement of copyright.

Disclaimer

Although Ecology and Heritage Partners Pty Ltd have taken all the necessary steps to ensure that an accurate document has been prepared, the company accepts no liability for any damages or loss incurred as a result of reliance placed upon the report and its contents.

CONTENTS

1	INTRODUCTION	4
1.1	Background.....	4
1.2	Study Area.....	4
2	METHODS	5
2.1	Desktop Assessment.....	5
2.2	Removal, Destruction or Lopping of Native Vegetation (the Guidelines)	5
2.3	Assessment Qualifications and Limitations.....	5
3	RESULTS	6
3.1	Vegetation Condition.....	6
3.2	Fauna Habitat.....	7
3.3	Significance Assessment	7
4	REMOVAL, DESTRUCTION OR LOPPING OF NATIVE VEGETATION (THE GUIDELINES)	9
4.1	Modelled Impacts to Native Vegetation	9
4.2	Offset Strategy.....	11
4.3	Implications.....	11
5	LEGISLATIVE AND POLICY IMPLICATIONS	13
5.1	<i>Environment Protection and Biodiversity Conservation Act 1999</i> (Commonwealth)	13
5.2	<i>Flora and Fauna Guarantee Act 1988</i> (Victoria).....	13
5.3	<i>Planning and Environment Act 1987</i> (Victoria)	13
5.4	<i>Catchment and Land Protection Act 1994</i> (Victoria).....	15
5.5	<i>Wildlife Act 1975</i> and Wildlife Regulations 2013 (Victoria).....	15
6	MITIGATION MEASURES	16
7	SUMMARY OF PLANNING IMPLICATIONS	17
	REFERENCES	19
	FIGURES	20
	APPENDIX 1 ENSYM REPORTS	28
	APPENDIX 2 AVAILABLE NATIVE VEGETATION CREDITS	48

1 INTRODUCTION

1.1 Background

Ecology and Heritage Partners Pty Ltd was commissioned by Mornington Peninsula Shire Council to undertake an Ecological Impact Desktop Assessment for the Dromana Shared Path Project, Victoria.

We understand that Mornington Peninsula Shire Council is undertaking preliminary investigations for several shared path options and the feasibility of these options from an ecology perspective is being investigated.

The purpose of this assessment was to identify the extent and type of native vegetation present within the study area based on a desktop assessment, and to determine the likely presence of significant flora and fauna species and/or ecological communities. This report presents the results of the assessment and discusses the potential ecological and legislative implications associated with the proposed action.

1.2 Study Area

The project is in Dromana, with several shared path options being considered from the corner of Boundary Road and Rainier Street to Dromana Secondary College, Harrisons Road, Dromana (the study area). The two main path routes have been labelled Path Option 1 and Path Option 2, with each path option within each route being further labelled as Path Option 1a, 2a, etc. The study area is located approximately 60 kilometres south of Melbourne's CBD (Figure 1).

The study area follows several road reserves, which are likely to comprise a mixture of natural bush and open grassy spaces. The western half of the study area is generally flat, with the topography rising upwards towards the study area's south-eastern corner. Sheepwash Creek travels in a general north-south alignment through approximately the centre of the study area.

According to the Victorian Department of Energy, Environment and Climate Action (DEECA) NatureKit Map (DEECA 2024a), the study area is located within the Gippsland Plain bioregion, Melbourne Water Catchment Management Authority (CMA) and Mornington Peninsula Shire Council municipality.

2 METHODS

2.1 Desktop Assessment

Relevant literature, online-resources and databases were reviewed to provide an assessment of flora and fauna values associated with the study area. The following information sources were reviewed:

- The DEECA NatureKit Map (DEECA 2024a) and Native Vegetation Regulation (NVR) Map (DEECA 2024b) for:
 - Modelled data for location risk, native vegetation patches, scattered trees and habitat for rare or threatened species; and,
 - The extent of historic and current Ecological Vegetation Classes (EVCs).
- EVC benchmarks (DEECA 2024c) for descriptions of EVCs within the relevant bioregion;
- The Victorian Biodiversity Atlas (VBA) for previously documented flora and fauna records within the project locality (DEECA 2023);
- The Commonwealth Department of Climate Change, Energy, the Environment and Water (DCCEEW) Protected Matters Search Tool (PMST) for matters of National Environmental Significance (NES) protected under the *Environment Protection and Biodiversity Conservation Act 1999* (EPBC Act) (DCCEEW 2024);
- Relevant listings under the Victorian *Flora and Fauna Guarantee Act 1988* (FFG Act), including the latest Threatened (DEECA 2024d) and Protected (Department of Environment, Land, Water and Planning [DELWP] 2019) Lists;
- The online VicPlan Map (Department of Transport and Planning [DTP] 2024) to ascertain current zoning and environmental overlays in the study area; and
- Aerial photography of the study area.

2.2 Removal, Destruction or Lopping of Native Vegetation (the Guidelines)

Under the *Planning and Environment Act 1987*, Clause 52.17 of the Mornington Peninsula Planning Scheme requires a planning permit to remove, destroy or lop any native vegetation, including dead vegetation. The assessment process for the clearing of vegetation follows the *Guidelines for the removal, destruction or lopping of native vegetation* (the Guidelines) (DELWP 2017a).

2.3 Assessment Qualifications and Limitations

This report has been written based on the quality and extent of the modelled ecological values and habitat considered to be present or absent at the time of the desktop assessment being undertaken. Given the assessment was desktop-based, a field assessment was not undertaken to determine the actual flora and fauna species, or ecological communities present within the study area, or potential habitat for threatened flora and fauna species. A field assessment will be required to determine the ecological values present on site as part of a planning permit application.

3 RESULTS

3.1 Vegetation Condition

Based on aerial imagery and Google Earth street view, the study area appears to contain large areas of native vegetation, as well as managed grassed areas.

3.1.1 Patches of Native Vegetation

Three EVCs are modelled to occur within the study area (DEECA 2024a), being Damp Heathy Woodland (EVC 793), Grassy Woodland (EVC 175) and Swamp Scrub (EVC 53) (Figure 2).

Damp Heathy Woodland is modelled to occur along the southern and eastern path routes within Path Options 1a and 2a. Based on DEECA's definitions, this EVC is characterised by a eucalypt woodland to 10 metres tall with a dense heathy or tall scrub understorey. The ground layer consists of small shrubs, herbs and grasses (DEECA 2024c).

Grassy Woodland is modelled to occur along the northern and eastern path routes within Path Option 1a. Based on DEECA's definitions, this EVC is characterised by open eucalypt woodland to 15 metres tall. The understorey generally contains a diverse layer of grasses and herbs, with the shrub layer being typically sparse (DEECA 2024c).

Swamp Scrub is modelled to occur along the waterways that intersect Path Option 2a along the study area's southern extent. Based on DEECA's definitions, this EVC is characterised by closed scrub to eight metres that is dominated by Swamp Paperbark *Melaleuca ericifolia*. Occasional eucalypts may emerge and where light penetrates the ground, a herbaceous groundcover is often present (DEECA 2024c).

A site assessment would be required to determine the presence and extent of these EVCs, and any other EVCs, along the path routes.

3.1.2 Large Trees in Patches

A Large Tree is defined as a native canopy tree that meets or is greater than the minimum Diameter at Breast Height (DBH) value specified in that EVC. The minimum DBH value for trees to be classed as Large Trees in Damp Heathy Woodland is 60 centimetres. For trees in Grassy Woodland, the minimum DBH value is 70 centimetres for eucalypts *Eucalyptus* spp. and 40 centimetres for Sheoaks *Allocasuarina* spp. Swamp Scrub does not contain a Large Tree value since it's dominated by scrub.

It is highly likely that patches of native vegetation, which are primarily located along the study area's eastern and southern boundaries, contain Large Trees.

3.1.3 Scattered Trees

Native scattered trees are classed as either a Large or small tree that does not form part of a patch. Large Trees are those that meet the minimum DBH threshold as described in Section 3.1.2, with any trees with a DBH less than this threshold being classed as a small tree.

It is highly likely that scattered native trees exist along the path routes in the more open areas and on the fringes of native vegetation patches.

3.1.4 *Introduced and Planted Vegetation*

Introduced vegetation in the form of exotic grass along nature strips and in wider road reserves, and planted trees in the streetscape are highly likely to be present, with these elements expected to be found in the greatest extent along Path Options 1a-c (Figure 2).

3.2 Fauna Habitat

Based on aerial imagery and Google Earth street view, eucalypt forests/woodlands occur within the study area, particularly along its eastern and southern boundaries (Figure 2). These would provide an important resource for arboreal fauna. Where the eucalypts are mature, they would likely provide an array of small, medium and large hollows, bark fissures and crevices. These are likely to be used for shelter and nesting by a range of hollow-dependent fauna including parrots, microbats, possums, gliders and owls. Scattered trees would provide habitat for more mobile fauna species, vantage points and nesting areas for diurnal and nocturnal raptors, as well as steppingstones for more mobile fauna moving through the study area, enhancing landscape permeability for native fauna. Bird species potentially utilising forest/woodland and scattered trees within the study area may include the Red Wattlebird *Anthochaera carunculata*, Rainbow Lorikeet *Trichoglossus haematodus*, Noisy Miner *Manorina melanocephala*, Sulphur-crested Cockatoo *Cacatua galerita* and Galah *Eolophus roseicapilla*.

Open grassy areas are likely to be used as a foraging resource by common generalist bird species which are tolerant of modified open areas. Fauna species potentially using this habitat include the Australian Magpie *Cracticus tibicen*, Little Raven *Corvus mellori* and Magpie-lark *Grallina cyanoleuc*.

3.3 Significance Assessment

3.3.1 *Flora*

No national (i.e. under the EPBC Act) or State significant (i.e. under the FFG Act) flora have previously been recorded within approximately 900 metres of the study area, with many previous records within five kilometres of the study area being at least 20 years old (Figure 3). It is unlikely that any significant flora species would be within the open grassy areas in the west given these road reserves would have been historically disturbed to facilitate housing development and road construction, and would be routinely mown/slashed.

There is a higher likelihood of significant flora species being present within the eucalypt forests/woodland. A site assessment would be required to determine if any significant species are present and also understand the suitability of the study area for any potential significant species.

3.3.2 *Fauna*

There are several previous records of significant fauna species within one kilometre of the study area (Figure 4). The species considered to be the most relevant on Figure 4 are the Powerful Owl *Ninox strenua*, White-throated Needletail *Hirundapus caudacutus* and Southern Toadlet *Pseudophryne dendyi*.

The Powerful Owl occupies a range of habitats, from woodland to tall open forests. They utilise large tree hollows that are at least 50 centimetres deep in trees at least 150 years old (Office of Environment and Heritage [OEH] 2024). The presence of any hollows with suitable dimensions cannot be determined as part of a desktop assessment but should be noted during a site assessment. The White-throated Needletail is classed as a migratory bird under the EBPC Act and occurs along the entire length of the eastern Australian coast when in Australia. This species is most associated with wooded areas, but also flies over partially cleared farmlands (Threatened Species Scientific Committee 2019). The Southern Toadlet is typically found in dry sclerophyll forests in small tunnels under logs, bark and leaf litter and does not necessarily need to be near permanent water (DELWP 2017b).

While there is potential for significant fauna species to occupy the study area, they are unlikely to solely rely on habitat within the study area for foraging or breeding purposes given the paths are so narrow and small in the wider landscape context.

3.3.3 *Ecological Communities*

Two nationally listed ecological communities are predicted to occur within 10 kilometres of the study area (DCCEEW 2024):

- Giant Kelp Marine Forests of South East Australia; and,
- Natural Damp Grassland of the Victorian Coastal Plains.

However, it is unlikely that vegetation within the study area meets the condition thresholds that define any national or State-significant communities. For the Natural Damp Grassland of the Victorian Coastal Plains ecological community, the EVCs modelled to occur within and around the study area (Figure 2) are based on woodland and scrubland vegetation structures, which do not align with this grassland ecological community. A site survey would be required to definitively rule out the presence of any significant ecological communities.

4 REMOVAL, DESTRUCTION OR LOPPING OF NATIVE VEGETATION (THE GUIDELINES)

4.1 Modelled Impacts to Native Vegetation

Native vegetation clearing scenarios have been provided for Path Options 1a and 2a (Figure 2). These scenarios assume a total path impact footprint width of four metres, which includes a two-metre-wide sealed path and one-metre-wide construction impact footprint on either side of the path. All modelled native vegetation EVCs along the two path alignments within the four-metre impact footprint are considered lost for the purposes of these scenarios.

An important consideration in this analysis is that the scenarios do not reflect the physical presence and extent of native vegetation patches within the study area, which may be different to the modelled EVC extent on Figure 2. Furthermore, impacts to Large Trees in patches, scattered Large Trees and scattered small trees are not accounted for in this analysis, which would be accounted for in the impact calculations if they were being removed as part of the shared path development. A site assessment would be required to accurately determine the extent of native vegetation patches and tree locations from which to calculate the impacts as part of a Biodiversity Assessment report that forms part of a planning permit application. Further, once the on-ground assessment is undertaken, native vegetation (and biodiversity) avoidance and minimisation strategies will be required as part of any Biodiversity Assessment, which accompanies a planning permit application.

4.1.1 Modelled vegetation proposed to be removed

Path Option 1a

Path Option 1a is within Location 2, with 0.608 hectares of native vegetation proposed to be removed. As such, a permit application would fall under the Detailed assessment pathway (Table 1). Condition scores for vegetation proposed to be removed are based on modelled scores available in the NVR Map (DEECA 2024b).

Table 1. Removal of Native Vegetation for Path Option 1a (the Guidelines) (DELWP 2017a).

Assessment pathway	Detailed
Location Category	2
Total Extent (past and proposed) (ha)	0.608
Extent of past removal (ha)	0.000
Extent of proposed removal (ha)	0.608
Large Trees (scattered and in patches) to be removed (no.)	0
Small scattered trees to be removed (no.)	0
EVC Conservation Status of vegetation to be removed	Endangered (Grassy Woodland) and Vulnerable (Damp Heathy Woodland)

Path Option 2a

Path Option 2a is within Location 3 with 1.299 hectares of native vegetation proposed to be removed. As such, a permit application would fall under the Detailed assessment pathway (Table 2). Condition scores for vegetation proposed to be removed are based on modelled scores available in the NVR Map (DEECA 2024b).

Table 2. Removal of Native Vegetation for Path Option 2a (the Guidelines) (DELWP 2017a).

Assessment pathway	Detailed
Location Category	3
Total Extent (past and proposed) (ha)	1.299
Extent of past removal (ha)	0.000
Extent of proposed removal (ha)	1.299
Large Trees (scattered and in patches) to be removed (no.)	0
Small scattered trees to be removed (no.)	0
EVC Conservation Status of vegetation to be removed	Endangered (Grassy Woodland, Swamp Scrub) and Vulnerable (Damp Heathy Woodland)

4.1.2 Offset Targets

Path Option 1a

The offset requirements for native vegetation removal along Path Option 1a are 0.448 General Habitat Units (GHUs). A summary of proposed vegetation losses and associated offset requirements is presented in Table 3 and the EnSym report is presented in Appendix 1.

Table 3. Offset Targets for Path Option 1a.

General Offsets Required	0.448 General Habitat Units
Large Trees	0
Vicinity (catchment/council)	Melbourne Water CMA / Mornington Peninsula Shire Council municipality
Minimum Strategic Biodiversity Value*	0.522

*The minimum Strategic Biodiversity Value is 80% of the weighted average score across habitat zones where a General offset is required.

Path Option 2a

The offset requirements for native vegetation removal along Path Option 2a are 1.198 GHUs. A summary of proposed vegetation losses and associated offset requirements is presented in Table 4 and the EnSym report is presented in Appendix 1.

Table 4. Offset Targets for Path Option 2a.

General Offsets Required	1.198 General Habitat Units
Large Trees	0
Vicinity (catchment/council)	Melbourne Water CMA / Mornington Peninsula Shire Council municipality
Minimum Strategic Biodiversity Value*	0.703

*The minimum Strategic Biodiversity Value is 80% of the weighted average score across habitat zones where a General offset is required.

4.2 Offset Strategy

According to DEECAs Native Vegetation Offset Register (DEECA 2024e), there are 17 offset sites for Path Option 1a and 12 offset sites for Path Option 2a within the Melbourne Water CMA or Mornington Peninsula Shire Council municipality that can be used to satisfy the GHU offset requirements.

An offset register search statement for each path option identifying the relevant offsite sites is provided in Appendix 2, which provides evidence that the offset obligation can be secured without any difficulty should a permit be provided for the project.

4.3 Implications

The purpose of Clause 52.17 and the Guidelines (DELWP 2017a) are to use a three-step approach (i.e. the mitigation hierarchy) to ensure there is no net loss to biodiversity in Victoria as a result of the removal, destruction or lopping of native vegetation. In order of importance, these are to:

1. Avoid the removal, destruction or lopping of native vegetation.
2. Minimise impacts from the removal, destruction or lopping of native vegetation where avoidance cannot be achieved.
3. Provide an offset to compensate for the biodiversity impact if a permit is granted to remove, destroy or lop native vegetation.

Path Options 1a-c avoid larger areas of modelled native vegetation. However, if Path Options 2a or 2b are preferred, there are ways to potentially avoid/minimise native vegetation loss, such as aligning the path so it remains out of the Tree Protection Zones (TPZs) of Large Trees and directing the path through native vegetation patches of lesser quality. The location of these features would only be known following a site assessment.

Another factor to consider is that Grassy Woodland and Swamp Scrub have a Bioregional Conservation Status of Endangered, while Damp Heathy Woodland has a status of Vulnerable. The removal of native vegetation in Endangered EVCs is more heavily scrutinised by the authorities (i.e. Council, DEECA) when assessing a planning permit application to remove native vegetation. While Grassy Woodland is concentrated close to Path Option 1a, the area of Grassy Woodland that overlaps Path Option 1a is relatively small compared to the extent of Damp Heathy Woodland (and to a lesser extent Swamp Scrub) that overlaps Path Options 2a and 2b (Figure 2).

The offset costs associated with the GHU amounts in Table 3 and Table 4 are variable in that it is a fluid market where each offset credit owner specifies their own value per GHU. The cost per GHU amongst different offset credit owners will therefore fluctuate depending on supply/demand and other market conditions. For the purposes of this assessment the average GHU value for 2023 in the Melbourne Water CMA according to DEECA is used, being \$150,000.00 (excluding GST). For Path Option 1a, the cost to offset 0.448 GHUs would therefore be approximately \$67,200.00 (excluding GST) based on the modelled native vegetation extent. For Option 2a, the cost to offset 1.198 GHUs would be approximately \$179,700.00 (excluding GST).

5 LEGISLATIVE AND POLICY IMPLICATIONS

5.1 *Environment Protection and Biodiversity Conservation Act 1999 (Commonwealth)*

The proposed action is unlikely to have a significant impact on any matter of NES. As such, a referral to the Commonwealth Environment Minister is unlikely to be required regarding matters listed under the EPBC Act. However, this would have to be confirmed with a site assessment.

5.2 *Flora and Fauna Guarantee Act 1988 (Victoria)*

While a site assessment will confirm the presence or absence of FFG Act Threatened species, there is a moderate to high likelihood that FFG Act Protected flora species are present within the treed road reserves along the path's routes. Potential Protected flora species may include daisies, heaths and/or wattles, e.g. Black Wattle *Acacia mearnsi*, Golden Wattle *Acacia pycnantha*.

A permit under the FFG Act will be required for the removal of any Protected flora species, as the study area is located on public land. The proponent should allow up to six weeks to obtain an FFG Act permit through DEECA.

5.3 *Planning and Environment Act 1987 (Victoria)*

5.3.1 *Local Planning Scheme*

The study area is located within the Mornington Peninsula Shire Council. The following zoning and overlays apply (DTP 2024):

- General Residential Zone – Schedule 1 (GRZ1)
- Green Wedge Zone – Schedule 3 (GWZ3)
- Industrial 3 Zone (IN3Z)
- Public Use – Service and Utility Zone (PUZ1)
- Public Conservation and Resource Zone (PCRZ)
- Bushfire Management Overlay (BMO)
- Environmental Significance Overlay – Schedules 6, 8, 17 and 28 (ESO6, ESO8, ESO17, ESO28)
- Significant Landscape Overlay – Schedule 3 (SLO3)
- Vegetation Protection Overlay – Schedule 2 (VPO2)

The planning permit requirements for the above ESO, SLO and VPO schedules are provided in Table 5. Note that these environmental clauses and schedules only apply to certain parts of the study area (DTP 2024).

Table 5. Planning permit requirements for the environmental clauses.

Clause Number	Planning Permit Requirements
Environmental Significant Overlay (ESO)	A permit is required to remove, destroy or lop any native vegetation. This does not apply if a schedule to this overlay specifically states that a permit is not required.
ESO Schedule 6 Kangeron Basin	A permit is required to remove, destroy or lop any native vegetation.
ESO Schedule 8 Arthurs Seat Escarpment	A permit is required to remove, destroy or lop any native vegetation. A permit is not required to remove, destroy or lop native vegetation specified in the schedule to Clause 52.17.
ESO Schedule 17 Streamlines	No permit requirements specified.
ESO Schedule 28 Mornington Peninsula Bushland	A permit is required to remove, destroy or lop any native vegetation. A permit is not required to remove, destroy or lop native vegetation specified in the schedule to Clause 52.17.
Significant Landscape Overlay (SLO)	A permit is required to remove, destroy or lop any vegetation specified in a schedule to this overlay.
SLO Schedule 3 Scenic Roads	A permit is required to remove, destroy or lop any native vegetation. A permit is not required to remove, destroy or lop native vegetation specified in the schedule to Clause 52.17.
Vegetation Protection Overlay (VPO)	A permit is required to remove, destroy or lop any vegetation specified in a schedule to this overlay.
VPO Schedule 2 Significant Treelines	A permit is required to remove, destroy or lop any vegetation. A permit is not required to remove, destroy or lop native vegetation specified in the schedule to Clause 52.17.

5.3.2 The Guidelines

The State Planning Policy Framework and the decision guidelines at Clause 12.01 Biodiversity and Clause 52.17 Native Vegetation require Planning and Responsible Authorities to have regard for the Guidelines (DELWP 2017a).

5.3.3 Implications

Path Option 1a is within Location 2, with 0.608 hectares of modelled native vegetation proposed to be removed from the impact area. As such, the permit application falls under the Detailed assessment pathway. The offset requirement for native vegetation removal is 0.448 General Habitat Units.

Path Option 2a is within Location 3, with 1.299 hectares of modelled native vegetation proposed to be removed from the impact area. As such, the permit application falls under the Detailed assessment pathway. The offset requirement for native vegetation removal is 1.198 General Habitat Units.

A planning permit from the Mornington Peninsula Shire Council is required to remove, destroy or lop any native vegetation under Clause 52.17, the ESO, ESO6, ESO8, ESO28, the SLO and SLO3.

A permit will also be required to remove any vegetation (i.e. native or non-native) under the VPO and VPO2.

5.4 Catchment and Land Protection Act 1994 (Victoria)

A site assessment would determine whether there were any noxious weeds and or pests listed as noxious under the CaLP Act. Listed noxious weeds and pests should be appropriately controlled throughout the study area if recorded.

5.5 Wildlife Act 1975 and Wildlife Regulations 2013 (Victoria)

The chosen path alignment may contain fauna habitat (e.g. tree hollows, nests, burrows) that could be occupied by native animals such as birds, possums and other mammals at the time of construction. Any persons engaged to remove, salvage, hold or relocate native fauna during construction must hold a current Management Authorisation under the *Wildlife Act 1975* or under any other Act issued by DEECA.

6 MITIGATION MEASURES

Recommended measures to mitigate impacts upon terrestrial values likely to be present within the study area include:

- Minimise impacts to native vegetation and habitats through construction and micro-siting techniques, including fencing retained areas of native vegetation during construction. If indeed necessary, trees should be lopped or trimmed rather than removed.
- All contractors should be aware of ecologically sensitive areas to minimise the likelihood of inadvertent disturbance to areas marked for retention. Native vegetation (areas of sensitivity) should be included as a mapping overlay on any construction plans;
- Tree Protection Zones (TPZs) must be implemented to prevent indirect losses of native vegetation to be retained during construction activities (DSE 2011). A TPZ applies to a tree and is a specific area above and below the ground, with a radius 12 x the Diameter at Breast Height (DBH). At a minimum standard a TPZ should consider the following:
 - A TPZ of trees should be a radius no less than two metres or greater than 15 metres;
 - Construction, related activities and encroachment (i.e. earthworks such as trenching that disturb the root zone) should be excluded from the TPZ;
 - Where encroachment is 10% or more of the total area of the TPZ, the tree should be considered as lost and offset accordingly (unless an arboricultural report specifies otherwise);
 - Directional drilling may be used for works within the TPZ without being considered encroachment. The directional bore should be at least 600 millimetres deep;
 - The above guidelines may be varied if a qualified arborist confirms the works will not significantly damage the tree (including stags/dead trees). In this case the tree would be retained, and no offset would be required; and,
 - Where the minimum standard for a TPZ has not been met an offset may be required.
- Removal of any habitat trees or shrubs (particularly hollow-bearing trees or trees/shrubs with nests) should be undertaken between February and September to avoid the breeding season for most fauna species. If any habitat trees or shrubs are proposed to be removed, this should be undertaken under the supervision of an appropriately qualified zoologist to salvage and translocate any displaced fauna. A Fauna Management Plan may be required to guide the salvage and translocation process;
- Where possible, construction stockpiles, machinery, roads, and other infrastructure should be placed away from areas supporting native vegetation and/or Large Trees; and,
- As indigenous flora provides valuable habitat for indigenous fauna, it is recommended that any landscape plantings that are undertaken as part of the proposed works are conducted using indigenous species sourced from a local provenance, rather than exotic deciduous trees and shrubs.

7 SUMMARY OF PLANNING IMPLICATIONS

Further requirements associated with development of the study area, as well as additional studies or reporting that may be required, are provided in Table 6.

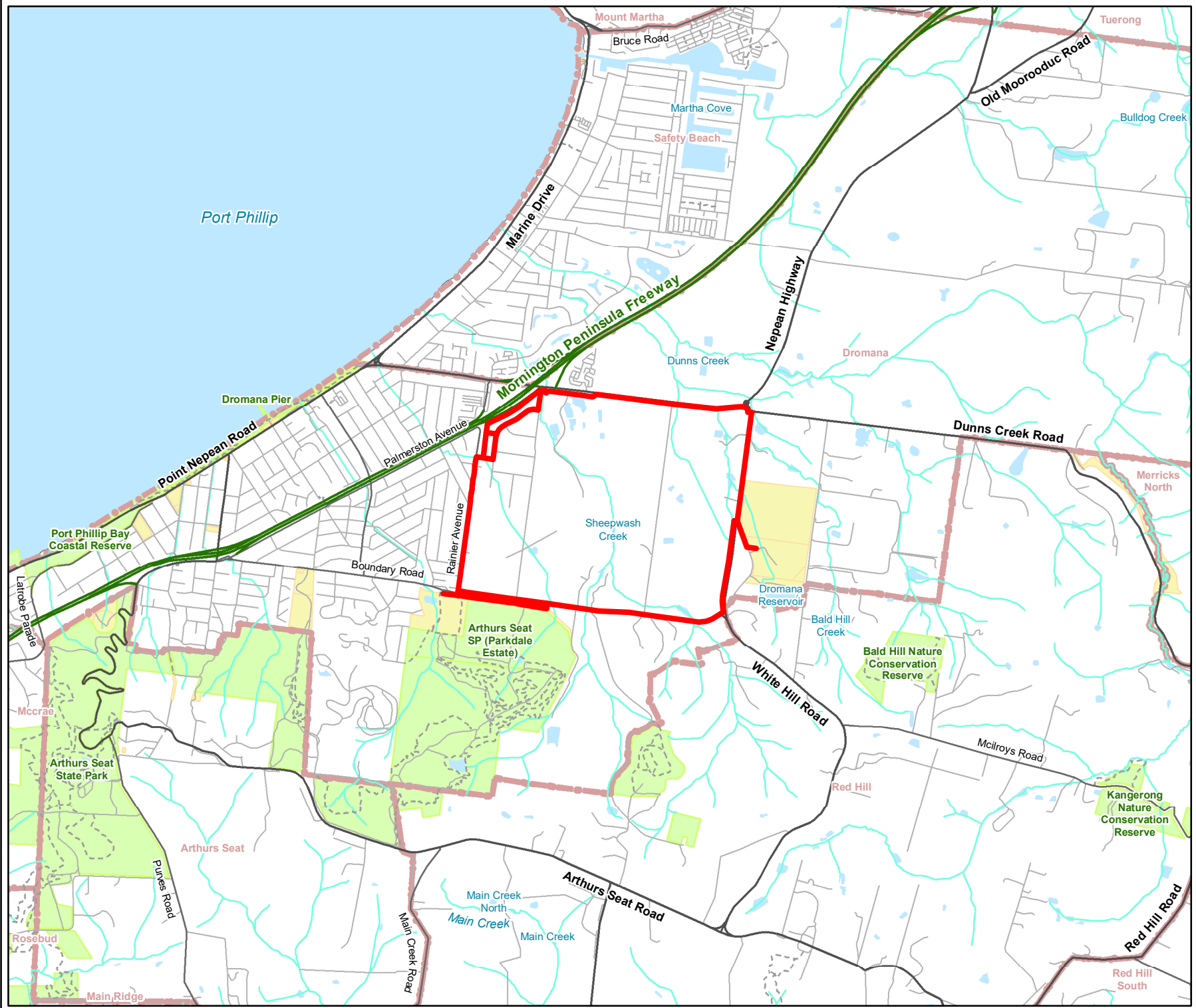
Table 6. Further requirements associated with development of the study area.

Relevant Legislation	Implications	Further Action
<i>Environment Protection and Biodiversity Conservation Act 1999</i>	The proposed action is unlikely to have a significant impact on any matter of NES. As such, a referral to the Commonwealth Environment Minister is unlikely to be required regarding matters listed under the EPBC Act. However, this would have to be confirmed with a site assessment.	Undertake a site assessment to determine if a response under the EPBC Act is required.
<i>Flora and Fauna Guarantee Act 1988</i>	<p>While a site assessment will confirm the presence or absence of FFG Act Threatened species, there is a moderate to high likelihood that FFG Act Protected flora species are present within the treed road reserves along the path's routes. Potential Protected flora species may include daisies, heaths and/or wattles, e.g. Black Wattle <i>Acacia mearnsi</i>, Golden Wattle <i>Acacia pycnantha</i>.</p> <p>A permit under the FFG Act will be required for the removal of any Protected flora species, as the study area is located on public land. The proponent should allow up to six weeks to obtain an FFG Act permit through DEECA.</p>	<p>Undertake a site assessment to determine if a FFG Act permit is required for the removal of FFG Act Threatened and/or Protected species.</p> <p>If it is required, prepare and submit an FFG Act permit application to DEECA.</p>
<i>Planning and Environment Act 1987</i>	<p>Path Option 1a is within Location 2, with 0.608 hectares of modelled native vegetation proposed to be removed from the impact area. As such, the permit application falls under the Detailed assessment pathway. The offset requirement for native vegetation removal is 0.448 General Habitat Units.</p> <p>Path Option 2a is within Location 3, with 1.299 hectares of modelled native vegetation proposed to be removed from the impact area. As such, the permit application falls under the Detailed assessment pathway. The offset requirement for native vegetation removal is 1.198 General Habitat Units.</p> <p>A planning permit from the Mornington Peninsula Shire Council is required to remove, destroy or lop any native vegetation under Clause 52.17, the ESO, ESO6, ESO8, ESO28, the SLO and SLO3.</p> <p>A permit will also be required to remove any vegetation (i.e. native or non-native) under the VPO and VPO2.</p>	Prepare and submit a Planning Permit application.

Relevant Legislation	Implications	Further Action
<i>Catchment and Land Protection Act 1994</i>	A site assessment would determine whether there were any noxious weeds and or pests listed as noxious under the CaLP Act. Listed noxious weeds and pests should be appropriately controlled throughout the study area if observed.	Listed noxious weeds and/or pests should be appropriately controlled throughout the study area if recorded during a site assessment
<i>Wildlife Act 1975</i>	Any persons engaged to conduct salvage and translocation or general handling of terrestrial fauna species must hold a current Management Authorisation.	Ensure wildlife specialists hold a current Management Authorisation.

REFERENCES

- DCCEEW 2024. Protected Matters Search Tool. [www Document] URL: <http://www.environment.gov.au/epbc/pmst/index.html>. Commonwealth Department of Climate Change, Energy, the Environment and Water, Canberra, ACT.
- DEECA 2023. Victorian Biodiversity Atlas. Sourced from GIS layers: “VBA_FLORA25”, “VBA_FLORA100”, “VBA_FAUNA25”, “VBA_FAUNA100”. December 2023. Victorian Department of Energy, Environment and Climate Action, Melbourne, Victoria.
- DEECA 2024a. NatureKit Map [www Document]. URL: <https://maps2.biodiversity.vic.gov.au/Html5viewer/index.html?viewer=NatureKit>. Victorian Department of Energy, Environment and Climate Action, Melbourne, Victoria.
- DEECA 2024b. Native Vegetation Regulation Map [www Document]. URL: <https://mapshare.vic.gov.au/nvr/>. Victorian Department of Energy, Environment and Climate Action, Melbourne, Victoria.
- DEECA 2024c. Ecological Vegetation Class (EVC) Benchmarks for each Bioregion [www Document]. URL: <https://www.environment.vic.gov.au/biodiversity/bioregions-and-evc-benchmarks>. Victorian Department of Energy, Environment and Climate Action, Melbourne, Victoria.
- DEECA 2024d. *Flora and Fauna Guarantee Act 1988* Threatened List – February 2024 [www Document]. URL: <https://www.environment.vic.gov.au/conserving-threatened-species/threatened-list>. Victorian Department of Energy, Environment and Climate Action, Melbourne, Victoria.
- DEECA 2024e. Search for Native Vegetation Credit Register [www Document]. URL: <https://nvcr.delwp.vic.gov.au/> Victorian Department of Energy, Environment and Climate Action, Melbourne, Victoria.
- DELWP 2017a. *Guidelines for the removal, destruction or lopping of native vegetation*. December 2017. Victorian Department of Environment, Land, Water and Planning, Melbourne, Victoria.
- DELWP 2017b. *Our Wildlife Fact Sheet – Southern Toadlet*. Victorian Department of Environment, Land, Water and Planning, Melbourne, Victoria.
- DELWP 2019. *Flora and Fauna Guarantee Act 1988* Protected Flora List – November 2019 [www Document]. URL: <https://www.environment.vic.gov.au/conserving-threatened-species/protected-flora-and-listed-fish>. Victorian Department of Environment, Land, Water and Planning, Melbourne, Victoria.
- DSE 2011. *Native Vegetation Technical information sheet: Defining an acceptable distance for tree retention during construction works*. Victorian Department of Sustainability and Environment, Melbourne, Victoria.
- DTP 2024. VicPlan Map [www Document]. URL: <https://mapshare.vic.gov.au/vicplan/>. Victorian Department of Transport and Planning, Melbourne, Victoria.
- OEH 2024. Powerful Owl – Profile [www Document]. URL: <https://threatenedspecies.bionet.nsw.gov.au/profile?id=10562>. New South Wales Office of Environment and Heritage, Sydney, New South Wales.
- Threatened Species Scientific Committee 2019. *Conservation Advice* *Hirundapus caudacutus* *White-throated Needletail*. Commonwealth Department of the Environment and Energy, Canberra, Australian Capital Territory.



Legend

- ▬ Study Area
- ▬ Freeway
- ▬ Major Road
- ▬ Collector Road
- ▬ Minor Road
- - - Proposed Road
- ▬ Minor Watercourse
- ▭ Permanent Waterbody
- ▭ Parks and Reserves
- ▭ Crown Land
- ▭ Localities



Figure 1
Location of the study area
Ecological Impact Assessment
for the Dromana Shared Path
Project

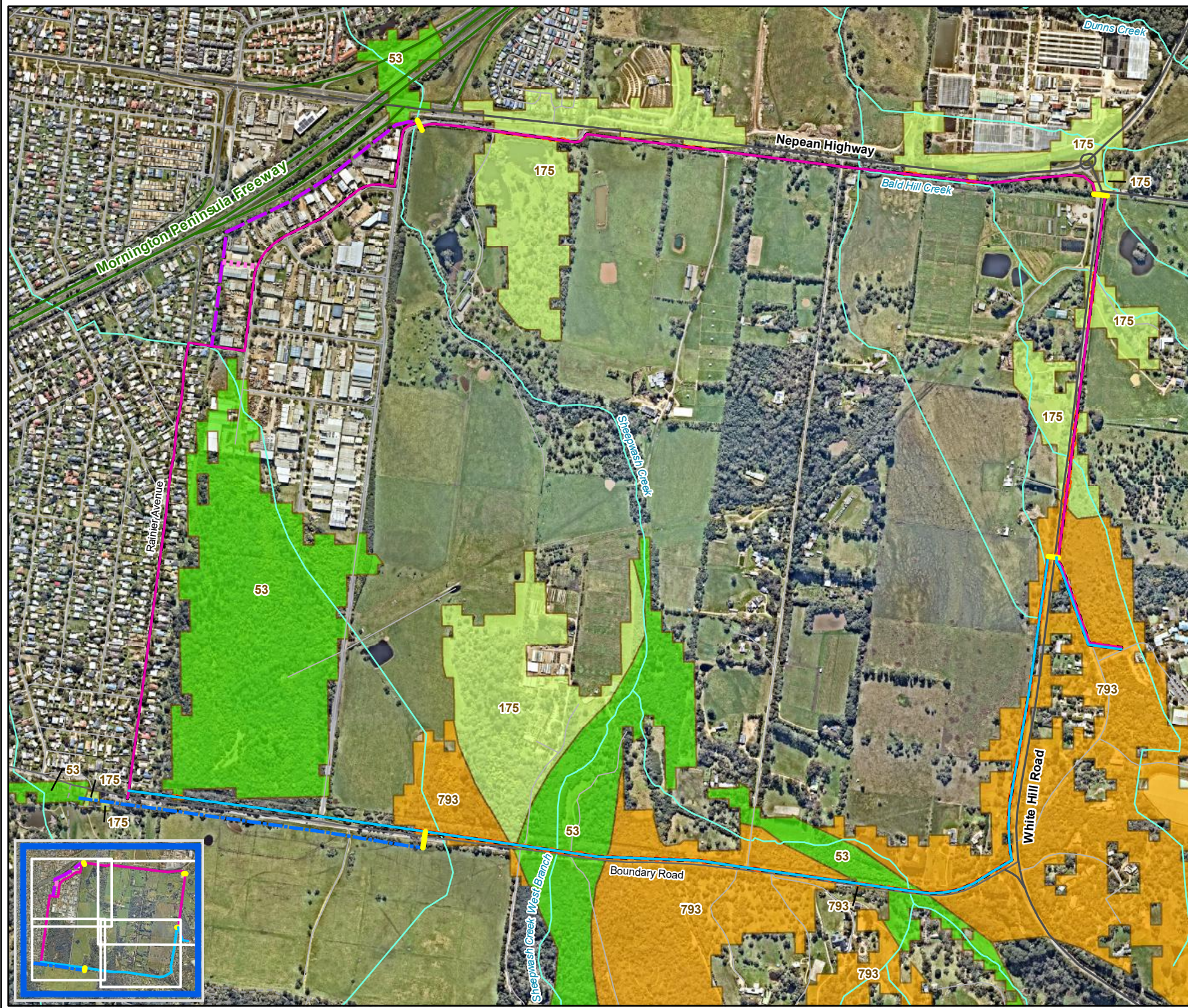
0 500 1,000
Metres

Map Scale: 1:40,000 @ A4
 Coordinate System: GDA2020 MGA Zone 55



VicMap Data: The State of Victoria does not warrant the accuracy or completeness of information in this publication and any person using or relying upon such information does so on the basis that the State of Victoria shall bear no responsibility or liability whatsoever for any errors, faults, defects or omissions in the information.

17835 Fig01 StudyArea G20 28/02/2024 melslv

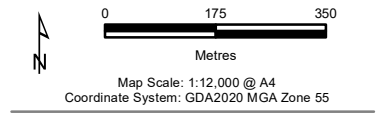


- Legend**
- Path option 1a
 - Path option 1b
 - Path option 1c
 - Path option 2a
 - Path option 2b
 - Proposed Pedestrian Crossing location
 - Indicative 4-metre-wide construction impact footprint.
 - Assumes a 2-metre-wide sealed path and 1-metre-wide construction impacts on either side of the path

- Modelled Ecological Vegetation Classes (DEECA 2005)**
- Damp Heathy Woodland (EVC 793)
 - Grassy Woodland (EVC 175)
 - Swamp Scrub (EVC 53)
 - Impacted vegetation



Figure 2 Overview
 Shared path option 1a and modelled native vegetation
Ecological Impact Assessment for the Dromana Shared Path Project



VicMap Data: The State of Victoria does not warrant the accuracy or completeness of information in this publication and any person using or relying upon such information does so on the basis that the State of Victoria shall bear no responsibility or liability whatsoever for any errors, faults, defects or omissions in the information.

17835_Fig02_EcoFeat_MBG20_8/05/2024_dvaladares



Legend

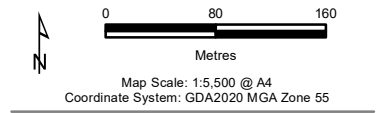
- Path option 1a
- - - Path option 1b
- · · Path option 1c
- Proposed Pedestrian Crossing location
- Indicative 4-metre-wide construction impact footprint.
- - - Assumes a 2-metre-wide sealed path and 1-metre-wide construction impacts on either side of the path

Modelled Ecological Vegetation Classes (DEECA 2005)

- Grassy Woodland (EVC 175)
- Swamp Scrub (EVC 53)
- Impacted vegetation



Figure 2a
 Shared path option 1a and modelled native vegetation
Ecological Impact Assessment for the Dromana Shared Path Project



VicMap Data: The State of Victoria does not warrant the accuracy or completeness of information in this publication and any person using or relying upon such information does so on the basis that the State of Victoria shall bear no responsibility or liability whatsoever for any errors, faults, defects or omissions in the information.

17835_Fig02_EcoFeat_MBG20_8/05/2024_dvaladares

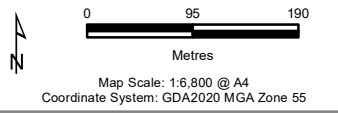


- Legend**
- Path option 1a
 - Path option 2a
 - - - Proposed Pedestrian Crossing location
 - Indicative 4-metre-wide construction impact footprint.
 - Assumes a 2-metre-wide sealed path and 1-metre-wide construction impacts on either side of the path

- Modelled Ecological Vegetation Classes (DEECA 2005)**
- Damp Heathy Woodland (EVC 793)
 - Grassy Woodland (EVC 175)
 - Swamp Scrub (EVC 53)
 - Impacted vegetation

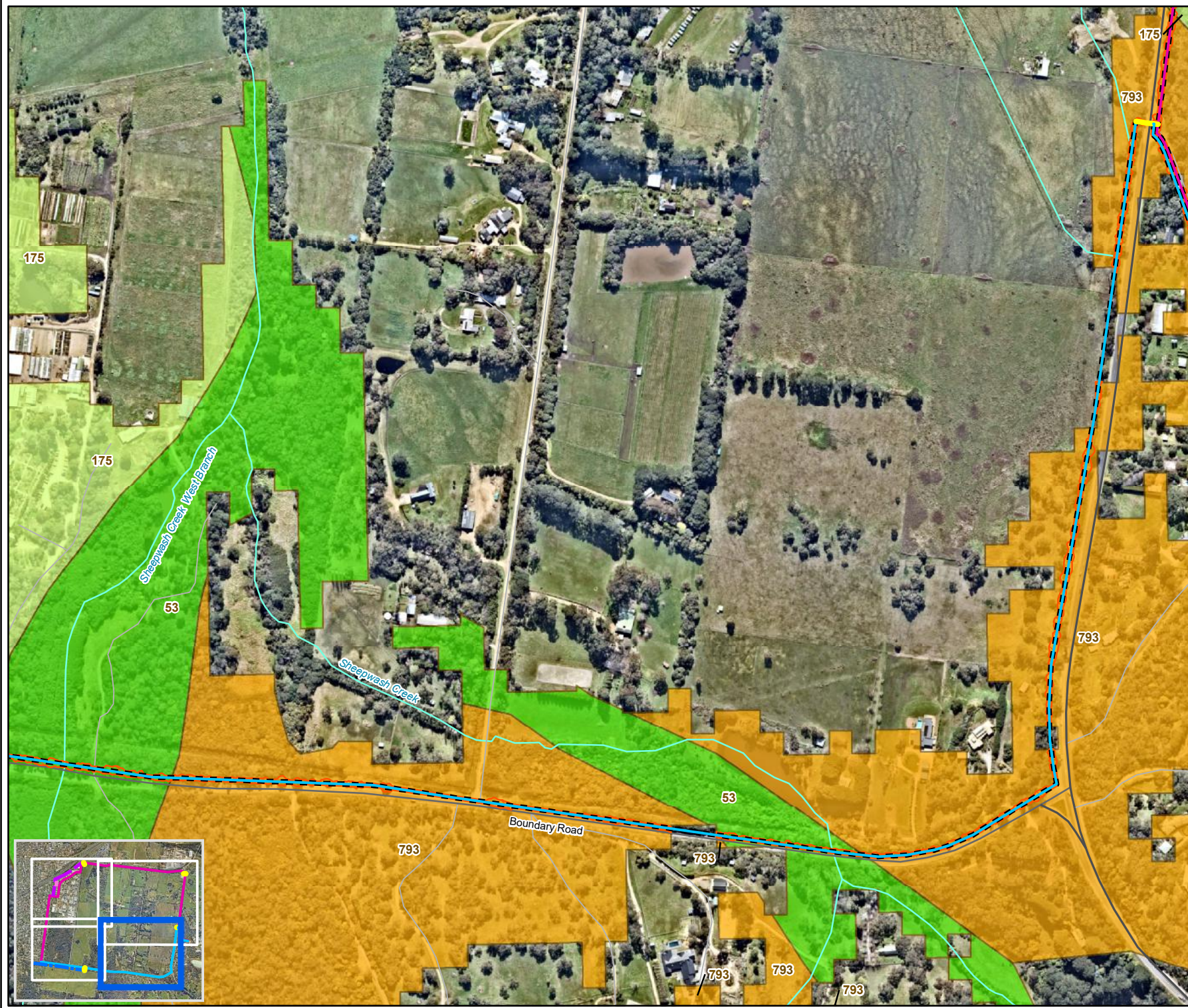


Figure 2b
 Shared path option 1a and modelled native vegetation
Ecological Impact Assessment for the Dromana Shared Path Project



VicMap Data: The State of Victoria does not warrant the accuracy or completeness of information in this publication and any person using or relying upon such information does so on the basis that the State of Victoria shall bear no responsibility or liability whatsoever for any errors, faults, defects or omissions in the information.

17835 Fig02 EcoFeat MBG20 8/05/2024 dvaladares

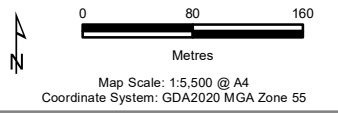


- Legend**
- Path option 1a
 - Path option 2a
 - Proposed Pedestrian Crossing location
 - Indicative 4-metre-wide construction impact footprint.
 - Assumes a 2-metre-wide sealed path and 1-metre-wide construction impacts on either side of the path

- Modelled Ecological Vegetation Classes (DEECA 2005)**
- Damp Heathy Woodland (EVC 793)
 - Grassy Woodland (EVC 175)
 - Swamp Scrub (EVC 53)
 - Impacted vegetation

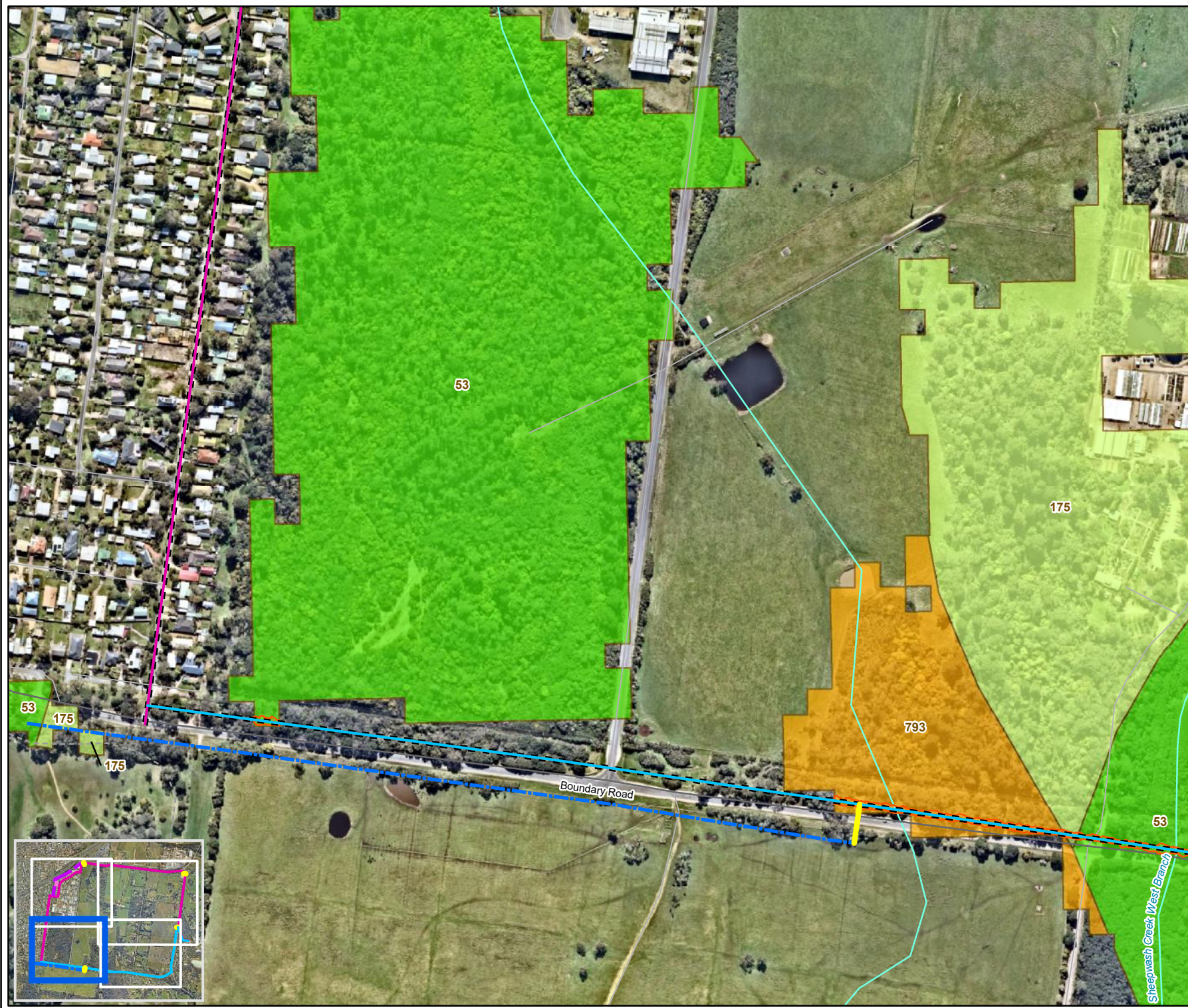


Figure 2c
 Shared path option 1a and modelled native vegetation
Ecological Impact Assessment for the Dromana Shared Path Project



VicMap Data: The State of Victoria does not warrant the accuracy or completeness of information in this publication and any person using or relying upon such information does so on the basis that the State of Victoria shall bear no responsibility or liability whatsoever for any errors, faults, defects or omissions in the information.

17835_Fig02_EcoFeat_MBG20_8/05/2024_dvaladares

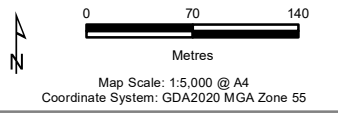


- Legend**
- Path option 1a
 - Path option 2a
 - - - Path option 2b
 - Proposed Pedestrian Crossing location
 - Indicative 4-metre-wide construction impact footprint.
 - Assumes a 2-metre-wide sealed path and 1-metre-wide construction impacts on either side of the path

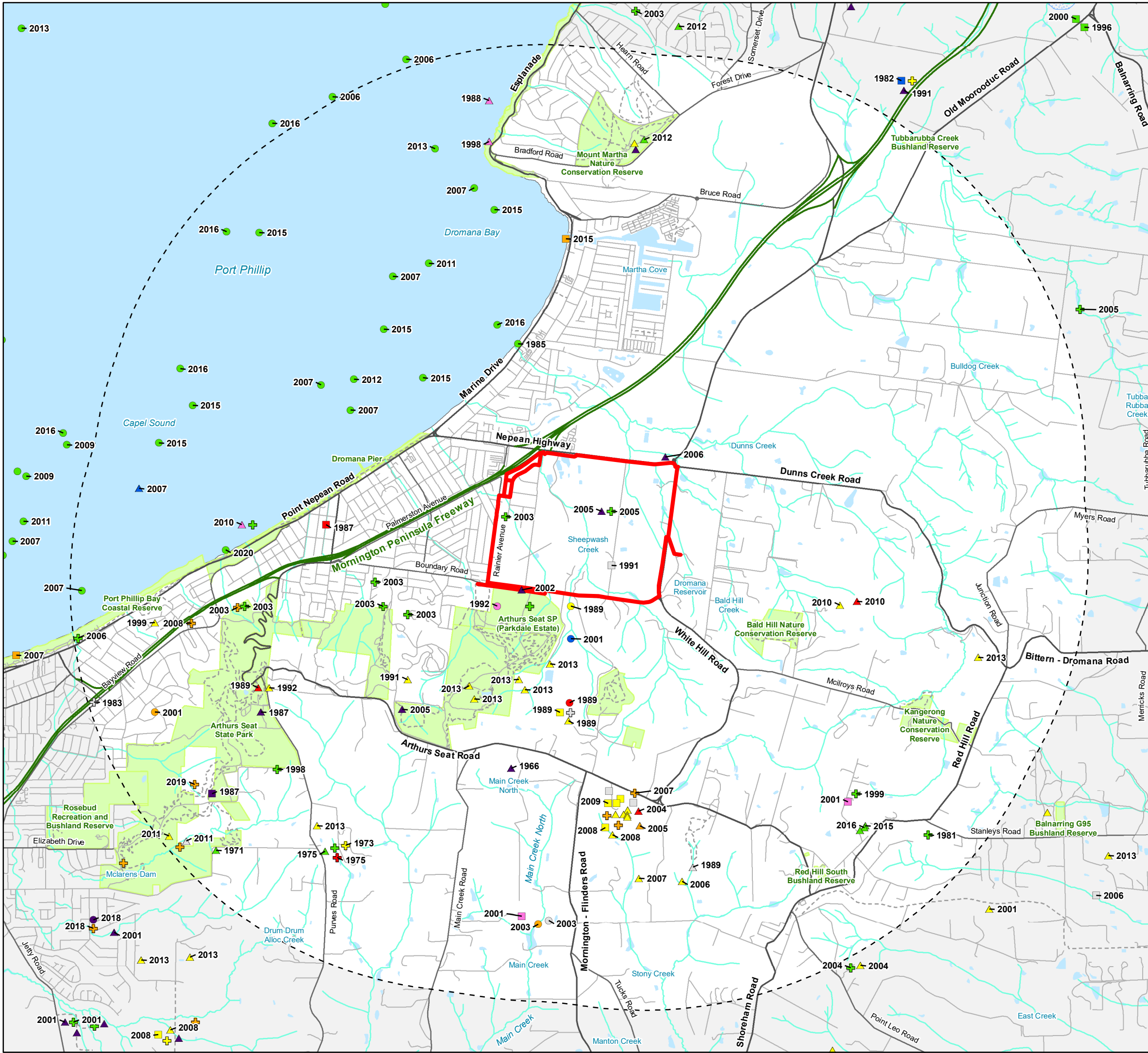
- Modelled Ecological Vegetation Classes (DEECA 2005)**
- Damp Heathy Woodland (EVC 793)
 - Grassy Woodland (EVC 175)
 - Swamp Scrub (EVC 53)
 - Impacted vegetation



Figure 2d
 Shared path option 1a and modelled native vegetation
Ecological Impact Assessment for the Dromana Shared Path Project



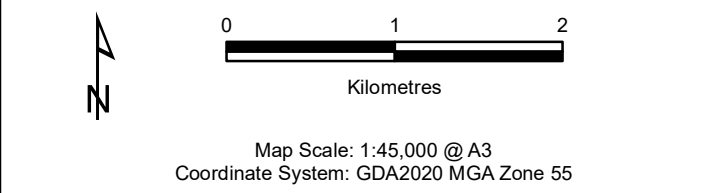
VicMap Data: The State of Victoria does not warrant the accuracy or completeness of information in this publication and any person using or relying upon such information does so on the basis that the State of Victoria shall bear no responsibility or liability whatsoever for any errors, faults, defects or omissions in the information.
 17835 Fig02 EcoFeat MBG20 8/05/2024 dvaladares



- Legend**
- Study Area
- Significant fauna**
- | | |
|------------------------|-----------------------------|
| ○ Australasian Bittern | ■ Lace Monitor |
| ● Barking Owl | △ Lewin's Rail |
| ● Blue-billed Duck | ▲ Little Eagle |
| ● Blue-winged Parrot | ▲ Little Egret |
| ● Burrunan Dolphin | ▲ Powerful Owl |
| ● Caspian Tern | ▲ Southern Brown Bandicoot |
| ● Diamond Dove | ▲ Southern Humpback Whale |
| ● Eastern Great Egret | ▲ Southern Right Whale |
| ■ Freckled Duck | ▲ Southern Toadlet |
| ■ Gang-gang Cockatoo | ⊕ Swift Parrot |
| ■ Green Turtle | ⊕ Wandering Albatross |
| ■ Grey Goshawk | ⊕ White-bellied Sea-Eagle |
| ■ Grey-crowned Babbler | ⊕ White-footed Dunnart |
| ■ Growling Grass Frog | ⊕ White-throated Needletail |
| ■ Hardhead | |



Figure 4
 Previously documented significant fauna within 5km of the study area
Ecological Impact Assessment for the Dromana Shared Path Project



Victorian Biodiversity Atlas (VBA) // Sourced from: 'VBA_FLORA25', 'VBA_FLORA100', 'VBA_FAUNA25' and 'VBA_FAUNA100'. Updated December 2023 © The State of Victoria, Department of Energy, Environment and Climate Action. Records prior to 1949 not shown.

VicMap Data: The State of Victoria does not warrant the accuracy or completeness of information in this publication and any person using or relying upon such information does so on the basis that the State of Victoria shall bear no responsibility or liability whatsoever for any errors, faults, defects or omissions in the information.

17835 Fin04 SigFauna G20 29/02/2024 MSL/ev

APPENDIX 1 ENSYM REPORTS

Pathway Option 1a

Scenario test – native vegetation removal

This report provides offset requirements for internal testing of different proposals to remove native vegetation. **This report DOES NOT support an application to remove, destroy or lop native vegetation under Clause 52.16 or 52.17 of planning schemes in Victoria.** A report must be obtained from the Department of Environment, Land, Water and Planning (DELWP).

Date of issue: 06/05/2024

Time of issue: 3:57 pm

Report ID: Scenario Testing

Project ID	EHP17835_Dromana_VG94_Scn1a
------------	-----------------------------

Assessment pathway

Assessment pathway	Detailed Assessment Pathway
Extent including past and proposed	0.608 ha
Extent of past removal	0.000 ha
Extent of proposed removal	0.608 ha
No. Large trees proposed to be removed	0
Location category of proposed removal	Location 2 The native vegetation is in an area mapped as an endangered Ecological Vegetation Class (as per the statewide EVC map). Removal of less than 0.5 hectares of native vegetation in this location will not have a significant impact on any habitat for a rare or threatened species.

1. Location map



Scenario test – native vegetation removal

Offset requirements if a permit is granted

Any approval granted will include a condition to obtain an offset that meets the following requirements:

General offset amount¹	0.448 general habitat units
Vicinity	Port Phillip and Westernport Catchment Management Authority (CMA) or Mornington Peninsula Shire Council
Minimum strategic biodiversity value score ²	0.522
Large trees	0 large trees

NB: values within tables in this document may not add to the totals shown above due to rounding

Appendix 1 includes information about the native vegetation to be removed

Appendix 2 includes information about the rare or threatened species mapped at the site.

Appendix 3 includes maps showing native vegetation to be removed and extracts of relevant species habitat importance maps

SCENARIO
TESTING
MODELLED
CONDITION

¹ The general offset amount required is the sum of all general habitat units in Appendix 1.

² Minimum strategic biodiversity score is 80 per cent of the weighted average score across habitat zones where a general offset is required

Scenario test – native vegetation removal

Next steps

Any proposal to remove native vegetation must meet the application requirements of the Detailed Assessment Pathway and it will be assessed under the Detailed Assessment Pathway.

This report DOES NOT support an application to remove, destroy or lop native vegetation under Clause 52.16 or 52.17 of planning schemes in Victoria.

If you wish to remove the mapped native vegetation you must submit the related shapefiles to the Department of Environment, Land, Water and Planning (DELWP) for processing, by email to ensymnvrtool.support@delwp.vic.gov.au. DELWP will provide a *Native vegetation removal report* that is required to meet the permit application requirements in accordance with *Guidelines for the removal, destruction or lopping of native vegetation* (Guidelines).

SCENARIO
TESTING
MODELLED
CONDITION

Appendix 1: Description of native vegetation to be removed

The species-general offset test was applied to your proposal. This test determines if the proposed removal of native vegetation has a proportional impact on any rare or threatened species habitats above the species offset threshold. The threshold is set at 0.005 per cent of the mapped habitat value for a species. When the proportional impact is above the species offset threshold a species offset is required. This test is done for all species mapped at the site. Multiple species offsets will be required if the species offset threshold is exceeded for multiple species.

Where a zone requires species offset(s), the species habitat units for each species in that zone is calculated by the following equation in accordance with the Guidelines:

$$\text{Species habitat units} = \text{extent} \times \text{condition} \times \text{species landscape factor} \times 2, \text{ where the species landscape factor} = 0.5 + (\text{habitat importance score}/2)$$

The species offset amount(s) required is the sum of all species habitat units per zone

Where a zone does not require a species offset, the general habitat units in that zone is calculated by the following equation in accordance with the Guidelines:

$$\text{General habitat units} = \text{extent} \times \text{condition} \times \text{general landscape factor} \times 1.5, \text{ where the general landscape factor} = 0.5 + (\text{strategic biodiversity value score}/2)$$

The general offset amount required is the sum of all general habitat units per zone.

Native vegetation to be removed

Information provided by or on behalf of the applicant in a GIS file						Information calculated by EnSym						
Zone	Type	BioEVC	BioEVC conservation status	Large tree(s)	Partial removal	Modelled Condition score	Polygon Extent	Extent without overlap	SBV score	HI score	Habitat units	Offset type
1-C	Patch	gipp0053	Endangered	0	no	0.660	0.002	0.002	0.460		0.001	General
2-A	Patch	gipp0175	Endangered	0	no	0.631	0.161	0.161	0.552		0.118	General
3-A	Patch	gipp0175	Endangered	0	no	0.620	0.067	0.067	0.690		0.052	General
4-A	Patch	gipp0175	Endangered	0	no	0.440	0.008	0.008	0.680		0.004	General
5-A	Patch	gipp0175	Endangered	0	no	0.480	0.017	0.017	0.200		0.007	General
6-A	Patch	gipp0175	Endangered	0	no	0.630	0.024	0.024	0.220		0.014	General
7-A	Patch	gipp0175	Endangered	0	no	0.640	0.022	0.022	0.600		0.017	General
8-A	Patch	gipp0175	Endangered	0	no	0.590	0.010	0.010	0.600		0.007	General
9-A	Patch	gipp0175	Endangered	0	no	0.684	0.088	0.088	0.758		0.079	General
10-B	Patch	gipp0793	Vulnerable	0	no	0.401	0.109	0.109	0.907		0.063	General
11-B	Patch	gipp0793	Vulnerable	0	no	0.693	0.100	0.100	0.619		0.084	General

SCENARIO TESTING MODELLED CONDITION

Appendix 2: Information about impacts to rare or threatened species' habitats on site

This table lists all rare or threatened species' habitats mapped at the site.

Species common name	Species scientific name	Species number	Conservation status	Group	Habitat impacted	% habitat value affected
Coast Helmet-orchid	<i>Corybas despectans</i>	500836	Vulnerable	Dispersed	Habitat importance map	0.0006
Coast Wirilda	<i>Acacia uncifolia</i>	504210	Rare	Dispersed	Habitat importance map	0.0004
Dune Wood-sorrel	<i>Oxalis rubens</i>	502390	Rare	Dispersed	Habitat importance map	0.0002
Glossy Grass Skink	<i>Pseudemoia rawlinsoni</i>	12683	Vulnerable	Dispersed	Habitat importance map	0.0002
Dense Leek-orchid	<i>Prasophyllum spicatum</i>	504506	Endangered	Dispersed	Habitat importance map	0.0002
Veined Spear-grass	<i>Austrostipa rudis subsp. australis</i>	504940	Rare	Dispersed	Habitat importance map	0.0002
Swamp Skink	<i>Lissolepis coventryi</i>	12407	Vulnerable	Dispersed	Habitat importance map	0.0001
Mauve-tuft Sun-orchid	<i>Thelymitra malvina</i>	503374	Vulnerable	Dispersed	Habitat importance map	0.0001
Green Leek-orchid	<i>Prasophyllum lindleyanum</i>	502702	Vulnerable	Dispersed	Habitat importance map	0.0001
Leafy Twig-sedge	<i>Cladium procerum</i>	500786	Rare	Dispersed	Habitat importance map	0.0001
Lewin's Rail	<i>Lewinia pectoralis pectoralis</i>	10045	Vulnerable	Dispersed	Habitat importance map	0.0001
Parsley Xanthosia	<i>Xanthosia leiophylla</i>	504562	Rare	Dispersed	Habitat importance map	0.0001
Purple Blown-grass	<i>Lachnagrostis punicea subsp. punicea</i>	504206	Rare	Dispersed	Habitat importance map	0.0000
Coast Twin-leaf	<i>Zygophyllum billardiarei</i>	503615	Rare	Dispersed	Habitat importance map	0.0000
Annual Fireweed	<i>Senecio glomeratus subsp. longifructus</i>	507144	Rare	Dispersed	Habitat importance map	0.0000
Southern Toadlet	<i>Pseudophryne semimarmorata</i>	13125	Vulnerable	Dispersed	Habitat importance map	0.0000
Naked Sun-orchid	<i>Thelymitra circumsepta</i>	503383	Vulnerable	Dispersed	Habitat importance map	0.0000
Sticky Wattle	<i>Acacia howittii</i>	500044	Rare	Dispersed	Habitat importance map	0.0000
Coast Bitter-bush	<i>Adriana quadripartita</i>	504755	Vulnerable	Dispersed	Habitat importance map	0.0000
Purple Diuris	<i>Diuris punctata</i>	501084	Vulnerable	Dispersed	Habitat importance map	0.0000

Rough Blown-grass	<i>Lachnagrostis rudis subsp. rudis</i>	500159	Endangered	Dispersed	Habitat importance map	0.0000
Australasian Bittern	<i>Botaurus poiciloptilus</i>	10197	Endangered	Dispersed	Habitat importance map	0.0000
Yarra Gum	<i>Eucalyptus yarraensis</i>	501326	Rare	Dispersed	Habitat importance map	0.0000
Grey Goshawk	<i>Accipiter novaehollandiae novaehollandiae</i>	10220	Vulnerable	Dispersed	Habitat importance map	0.0000
Growling Grass Frog	<i>Litoria raniformis</i>	13207	Endangered	Dispersed	Habitat importance map	0.0000
Baillon's Crake	<i>Porzana pusilla palustris</i>	10050	Vulnerable	Dispersed	Habitat importance map	0.0000
Clover Glycine	<i>Glycine latrobeana</i>	501456	Vulnerable	Dispersed	Habitat importance map	0.0000
Golden Cowslips	<i>Diuris behrii</i>	501061	Vulnerable	Dispersed	Habitat importance map	0.0000
Hardhead	<i>Aythya australis</i>	10215	Vulnerable	Dispersed	Habitat importance map	0.0000
Australasian Shoveler	<i>Anas rhynchotis</i>	10212	Vulnerable	Dispersed	Habitat importance map	0.0000
Green-striped Greenhood	<i>Pterostylis chlorogramma</i>	504728	Vulnerable	Dispersed	Habitat importance map	0.0000
White-bellied Sea-Eagle	<i>Haliaeetus leucogaster</i>	10226	Vulnerable	Dispersed	Habitat importance map	0.0000
Green Scentbark	<i>Eucalyptus fulgens</i>	505175	Rare	Dispersed	Habitat importance map	0.0000
Little Egret	<i>Egretta garzetta nigripes</i>	10185	Endangered	Dispersed	Habitat importance map	0.0000
Salt Lawrenzia	<i>Lawrenzia spicata</i>	501888	Rare	Dispersed	Habitat importance map	0.0000
Chestnut-rumped Heathwren	<i>Calamanthus pyrrhopygius</i>	10498	Vulnerable	Dispersed	Habitat importance map	0.0000
White-throated Needletail	<i>Hirundapus caudacutus</i>	10334	Vulnerable	Dispersed	Habitat importance map	0.0000
Blue-billed Duck	<i>Oxyura australis</i>	10216	Endangered	Dispersed	Habitat importance map	0.0000
Freckled Duck	<i>Stictonetta naevosa</i>	10214	Endangered	Dispersed	Habitat importance map	0.0000
Intermediate Egret	<i>Ardea intermedia</i>	10186	Endangered	Dispersed	Habitat importance map	0.0000
Eastern Great Egret	<i>Ardea modesta</i>	10187	Vulnerable	Dispersed	Habitat importance map	0.0000
Musk Duck	<i>Biziura lobata</i>	10217	Vulnerable	Dispersed	Habitat importance map	0.0000
Black Falcon	<i>Falco subniger</i>	10238	Vulnerable	Dispersed	Habitat importance map	0.0000
Southern Xanthosia	<i>Xanthosia tasmanica</i>	504088	Rare	Dispersed	Habitat importance map	0.0000

Habitat group

- Highly localised habitat means there is 2000 hectares or less mapped habitat for the species
- Dispersed habitat means there is more than 2000 hectares of mapped habitat for the species

Habitat impacted

- Habitat importance maps are the maps defined in the Guidelines that include all the mapped habitat for a rare or threatened species
- Top ranking maps are the maps defined in the Guidelines that depict the important areas of a dispersed species habitat, developed from the highest habitat importance scores in dispersed species habitat maps and selected VBA records
- Selected VBA record is an area in Victoria that represents a large population, roosting or breeding site etc.

SCENARIO TESTING
MODELLED CONDITION

Appendix 3 – Images of mapped native vegetation

2. Strategic biodiversity values map



Pathway Option 2a

Scenario test – native vegetation removal

This report provides offset requirements for internal testing of different proposals to remove native vegetation. **This report DOES NOT support an application to remove, destroy or lop native vegetation under Clause 52.16 or 52.17 of planning schemes in Victoria.** A report must be obtained from the Department of Environment, Land, Water and Planning (DELWP).

Date of issue: 06/05/2024

Report ID: Scenario Testing

Time of issue: 5:07 pm

Project ID	EHP17835_Dromana_VG94_Scn2a
------------	-----------------------------

Assessment pathway

Assessment pathway	Detailed Assessment Pathway
Extent including past and proposed	1.299 ha
Extent of past removal	0.000 ha
Extent of proposed removal	1.299 ha
No. Large trees proposed to be removed	0
Location category of proposed removal	Location 3 The native vegetation is in an area where the removal of less than 0.5 hectares could have a significant impact on habitat for one or more rare or threatened species. The native vegetation is also in an area mapped as an endangered Ecological Vegetation Class (as per the statewide EVC map).

1. Location map



Scenario test – native vegetation removal

Offset requirements if a permit is granted

Any approval granted will include a condition to obtain an offset that meets the following requirements:

General offset amount¹	1.198 general habitat units
Vicinity	Port Phillip and Westernport Catchment Management Authority (CMA) or Mornington Peninsula Shire Council
Minimum strategic biodiversity value score ²	0.703
Large trees	0 large trees

NB: values within tables in this document may not add to the totals shown above due to rounding

Appendix 1 includes information about the native vegetation to be removed

Appendix 2 includes information about the rare or threatened species mapped at the site.

Appendix 3 includes maps showing native vegetation to be removed and extracts of relevant species habitat importance maps

SCENARIO
TESTING
MODELLED
CONDITION

¹ The general offset amount required is the sum of all general habitat units in Appendix 1.

² Minimum strategic biodiversity score is 80 per cent of the weighted average score across habitat zones where a general offset is required

Scenario test – native vegetation removal

Next steps

Any proposal to remove native vegetation must meet the application requirements of the Detailed Assessment Pathway and it will be assessed under the Detailed Assessment Pathway.

This report DOES NOT support an application to remove, destroy or lop native vegetation under Clause 52.16 or 52.17 of planning schemes in Victoria.

If you wish to remove the mapped native vegetation you must submit the related shapefiles to the Department of Environment, Land, Water and Planning (DELWP) for processing, by email to ensymnvrtool.support@delwp.vic.gov.au. DELWP will provide a *Native vegetation removal report* that is required to meet the permit application requirements in accordance with *Guidelines for the removal, destruction or lopping of native vegetation* (Guidelines).

SCENARIO
TESTING
MODELLED
CONDITION

Appendix 1: Description of native vegetation to be removed

The species-general offset test was applied to your proposal. This test determines if the proposed removal of native vegetation has a proportional impact on any rare or threatened species habitats above the species offset threshold. The threshold is set at 0.005 per cent of the mapped habitat value for a species. When the proportional impact is above the species offset threshold a species offset is required. This test is done for all species mapped at the site. Multiple species offsets will be required if the species offset threshold is exceeded for multiple species.

Where a zone requires species offset(s), the species habitat units for each species in that zone is calculated by the following equation in accordance with the Guidelines:

$$\text{Species habitat units} = \text{extent} \times \text{condition} \times \text{species landscape factor} \times 2, \text{ where the species landscape factor} = 0.5 + (\text{habitat importance score}/2)$$

The species offset amount(s) required is the sum of all species habitat units per zone

Where a zone does not require a species offset, the general habitat units in that zone is calculated by the following equation in accordance with the Guidelines:

$$\text{General habitat units} = \text{extent} \times \text{condition} \times \text{general landscape factor} \times 1.5, \text{ where the general landscape factor} = 0.5 + (\text{strategic biodiversity value score}/2)$$

The general offset amount required is the sum of all general habitat units per zone.

Native vegetation to be removed

Information provided by or on behalf of the applicant in a GIS file						Information calculated by EnSym						
Zone	Type	BioEVC	BioEVC conservation status	Large tree(s)	Partial removal	Modelled Condition score	Polygon Extent	Extent without overlap	SBV score	HI score	Habitat units	Offset type
1-B	Patch	gipp0175	Endangered	0	no	0.731	0.008	0.008	0.671		0.007	General
2-A	Patch	gipp0053	Endangered	0	no	0.660	0.082	0.082	0.890		0.077	General
3-A	Patch	gipp0053	Endangered	0	no	0.774	0.138	0.138	0.913		0.153	General
4-A	Patch	gipp0053	Endangered	0	no	0.590	0.018	0.018	1.000		0.016	General
5-C	Patch	gipp0793	Vulnerable	0	no	0.660	0.002	0.002	0.890		0.001	General
6-C	Patch	gipp0793	Vulnerable	0	no	0.742	0.281	0.281	0.926		0.301	General
7-C	Patch	gipp0793	Vulnerable	0	no	0.708	0.147	0.147	0.872		0.146	General
8-C	Patch	gipp0793	Vulnerable	0	no	0.693	0.146	0.146	0.897		0.144	General
9-C	Patch	gipp0793	Vulnerable	0	no	0.529	0.216	0.216	0.792		0.153	General
10-C	Patch	gipp0793	Vulnerable	0	no	0.550	0.015	0.015	0.890		0.011	General
11-C	Patch	gipp0793	Vulnerable	0	no	0.399	0.096	0.096	0.908		0.055	General

Information provided by or on behalf of the applicant in a GIS file						Information calculated by EnSym						
Zone	Type	BioEVC	BioEVC conservation status	Large tree(s)	Partial removal	Modelled Condition score	Polygon Extent	Extent without overlap	SBV score	HI score	Habitat units	Offset type
12-C	Patch	gipp0793	Vulnerable	0	no	0.632	0.151	0.151	0.850		0.133	General

SCENARIO TESTING
 MODELLER CONDITION

Appendix 2: Information about impacts to rare or threatened species' habitats on site

This table lists all rare or threatened species' habitats mapped at the site.

Species common name	Species scientific name	Species number	Conservation status	Group	Habitat impacted	% habitat value affected
Coast Helmet-orchid	<i>Corybas despectans</i>	500836	Vulnerable	Dispersed	Habitat importance map	0.0016
Annual Fireweed	<i>Senecio glomeratus subsp. longifructus</i>	507144	Rare	Dispersed	Habitat importance map	0.0007
Dune Wood-sorrel	<i>Oxalis rubens</i>	502390	Rare	Dispersed	Habitat importance map	0.0007
Glossy Grass Skink	<i>Pseudemoia rawlinsoni</i>	12683	Vulnerable	Dispersed	Top ranking map	0.0005
Dense Leek-orchid	<i>Prasophyllum spicatum</i>	504506	Endangered	Dispersed	Habitat importance map	0.0004
Veined Spear-grass	<i>Austrostipa rudis subsp. australis</i>	504940	Rare	Dispersed	Habitat importance map	0.0004
Glossy Grass Skink	<i>Pseudemoia rawlinsoni</i>	12683	Vulnerable	Dispersed	Habitat importance map	0.0004
Southern Xanthosia	<i>Xanthosia tasmanica</i>	504088	Rare	Dispersed	Habitat importance map	0.0003
Green Scentbark	<i>Eucalyptus fulgens</i>	505175	Rare	Dispersed	Habitat importance map	0.0003
Swamp Skink	<i>Lissolepis coventryi</i>	12407	Vulnerable	Dispersed	Habitat importance map	0.0003
Mauve-tuft Sun-orchid	<i>Thelymitra malvina</i>	503374	Vulnerable	Dispersed	Habitat importance map	0.0002
Green Leek-orchid	<i>Prasophyllum lindleyanum</i>	502702	Vulnerable	Dispersed	Habitat importance map	0.0002
Southern Toadlet	<i>Pseudophryne semimarmorata</i>	13125	Vulnerable	Dispersed	Habitat importance map	0.0002
Naked Sun-orchid	<i>Thelymitra circumsepta</i>	503383	Vulnerable	Dispersed	Habitat importance map	0.0002
Leafy Twig-sedge	<i>Cladium procerum</i>	500786	Rare	Dispersed	Habitat importance map	0.0001
Parsley Xanthosia	<i>Xanthosia leiophylla</i>	504562	Rare	Dispersed	Habitat importance map	0.0001
Sticky Wattle	<i>Acacia howittii</i>	500044	Rare	Dispersed	Habitat importance map	0.0001
Yarra Gum	<i>Eucalyptus yarraensis</i>	501326	Rare	Dispersed	Habitat importance map	0.0001
Lewin's Rail	<i>Lewinia pectoralis pectoralis</i>	10045	Vulnerable	Dispersed	Habitat importance map	0.0001
Rough Blown-grass	<i>Lachnagrostis rudis subsp. rudis</i>	500159	Endangered	Dispersed	Habitat importance map	0.0001

Austral Tobacco	<i>Nicotiana suaveolens</i>	502275	Rare	Dispersed	Habitat importance map	0.0001
Green-striped Greenhood	<i>Pterostylis chlorogramma</i>	504728	Vulnerable	Dispersed	Habitat importance map	0.0001
Grey Goshawk	<i>Accipiter novaehollandiae novaehollandiae</i>	10220	Vulnerable	Dispersed	Habitat importance map	0.0001
Cobra Greenhood	<i>Pterostylis grandiflora</i>	502798	Rare	Dispersed	Habitat importance map	0.0000
Clover Glycine	<i>Glycine latrobeana</i>	501456	Vulnerable	Dispersed	Habitat importance map	0.0000
Purple Diuris	<i>Diuris punctata</i>	501084	Vulnerable	Dispersed	Habitat importance map	0.0000
Australasian Bittern	<i>Botaurus poiciloptilus</i>	10197	Endangered	Dispersed	Habitat importance map	0.0000
Grassland Earless Dragon	<i>Tympanocryptis pinguicolla</i>	12922	Critically endangered	Dispersed	Habitat importance map	0.0000
Black Falcon	<i>Falco subniger</i>	10238	Vulnerable	Dispersed	Habitat importance map	0.0000
Baillon's Crake	<i>Porzana pusilla palustris</i>	10050	Vulnerable	Dispersed	Habitat importance map	0.0000
White-throated Needletail	<i>Hirundapus caudacutus</i>	10334	Vulnerable	Dispersed	Habitat importance map	0.0000
Hardhead	<i>Aythya australis</i>	10215	Vulnerable	Dispersed	Habitat importance map	0.0000
Australasian Shoveler	<i>Anas rhynchotis</i>	10212	Vulnerable	Dispersed	Habitat importance map	0.0000
Powerful Owl	<i>Ninox strenua</i>	10248	Vulnerable	Dispersed	Habitat importance map	0.0000
Golden Cowslips	<i>Diuris behrii</i>	501061	Vulnerable	Dispersed	Habitat importance map	0.0000
Purple Blown-grass	<i>Lachnagrostis punicea subsp. punicea</i>	504206	Rare	Dispersed	Habitat importance map	0.0000
Chestnut-rumped Heathwren	<i>Calamanthus pyrrhopygius</i>	10498	Vulnerable	Dispersed	Habitat importance map	0.0000
Lace Monitor	<i>Varanus varius</i>	12283	Endangered	Dispersed	Habitat importance map	0.0000

Habitat group

- Highly localised habitat means there is 2000 hectares or less mapped habitat for the species
- Dispersed habitat means there is more than 2000 hectares of mapped habitat for the species

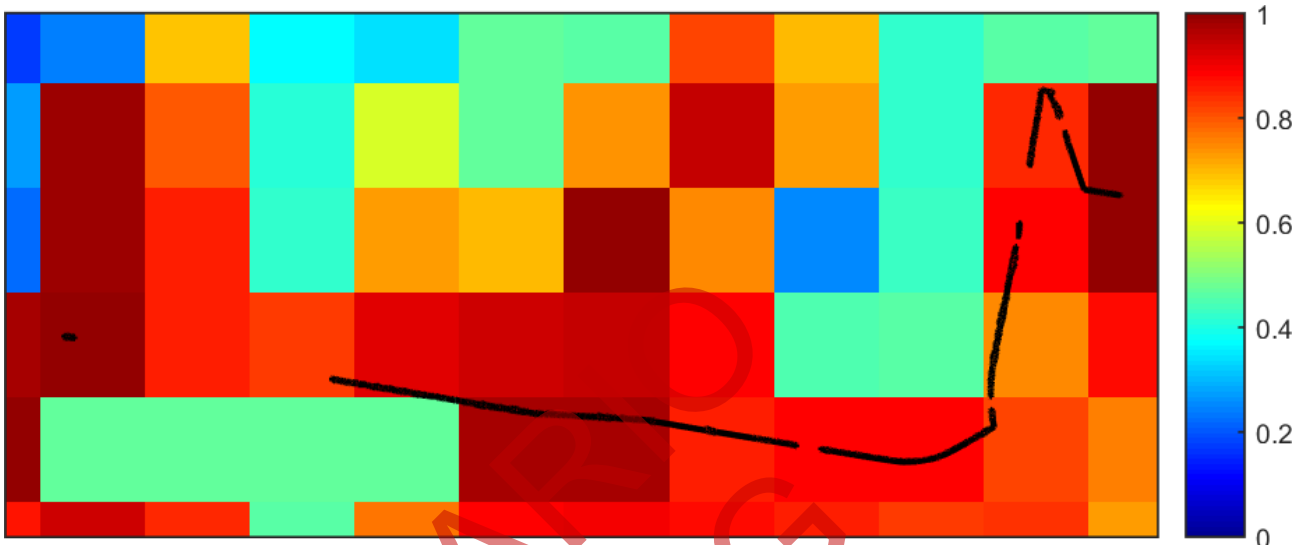
Habitat impacted

- Habitat importance maps are the maps defined in the Guidelines that include all the mapped habitat for a rare or threatened species
- Top ranking maps are the maps defined in the Guidelines that depict the important areas of a dispersed species habitat, developed from the highest habitat importance scores in dispersed species habitat maps and selected VBA records
- Selected VBA record is an area in Victoria that represents a large population, roosting or breeding site etc.

SCENARIO TESTING MODELLED CONDITION

Appendix 3 – Images of mapped native vegetation

2. Strategic biodiversity values map



SCENARIO TESTING MODELLING CONDITION

APPENDIX 2 AVAILABLE NATIVE VEGETATION CREDITS

Pathway Option 1a

Report of available native vegetation credits

This report lists native vegetation credits available to purchase through the Native Vegetation Credit Register.

This report is **not evidence** that an offset has been secured. An offset is only secured when the units have been purchased and allocated to a permit or other approval and an allocated credit extract is provided by the Native Vegetation Credit Register.

Date and time: 21/06/2024 10:08

Report ID: 24962

What was searched for?

General offset

General habitat units	Strategic biodiversity value	Large trees	Vicinity (Catchment Management Authority or Municipal district)	
0.448	0.522	0	CMA	Melbourne Water
			or LGA	Mornington Peninsula Shire

Details of available native vegetation credits on 21 June 2024 10:08

These sites meet your requirements for general offsets.

Credit Site ID	GHU	LT	CMA	LGA	Land owner	Trader	Fixed price	Broker(s)
BBA-0277	2.315	443	Melbourne Water	Mornington Peninsula Shire	No	Yes	No	Abezco, Ethos, VegLink
BBA-0670	16.212	106	Melbourne Water	Cardinia Shire	No	Yes	No	Abezco, VegLink
BBA-0677	7.259	1413	Melbourne Water	Whittlesea City	No	Yes	No	Abezco, VegLink
BBA-0678	42.841	2598	Melbourne Water	Nillumbik Shire	No	Yes	No	VegLink
BBA-0678_02	0.562	58	Melbourne Water	Nillumbik Shire	No	Yes	No	Abezco, VegLink
BBA-0931	1.258	0	Melbourne Water	Moorabool Shire	No	Yes	No	VegLink
BBA-2789	1.317	14	Melbourne Water	Baw Baw Shire	Yes	Yes	No	Contact NVOR
BBA-2790	2.911	116	Melbourne Water	Baw Baw Shire	Yes	Yes	No	Contact NVOR
BBA-2870	2.480	419	Melbourne Water	Yarra Ranges Shire	Yes	Yes	No	VegLink
BBA-2871	14.518	1592	Melbourne Water	Yarra Ranges Shire	Yes	Yes	No	VegLink
BBA-3017_02	1.984	0	Melbourne Water	Greater Geelong City	No	Yes	No	VegLink
TFN-C1664	0.745	44	Melbourne Water	Yarra Ranges Shire	Yes	Yes	No	Yarra Ranges SC
TFN-C1763_3	9.822	0	Melbourne Water	Mornington Peninsula Shire	Yes	Yes	No	Ecocentric, VegLink
VC_CFL-3682_01	1.834	0	Melbourne Water	Nillumbik Shire	Yes	Yes	No	Abezco

VC_CFL-3710_01	6.300	322	Melbourne Water	Yarra Ranges Shire	Yes	Yes	No	VegLink
VC_CFL-3744_01	1.164	349	Melbourne Water	Macedon Ranges Shire	Yes	Yes	No	VegLink
VC_CFL-3764_01	5.124	0	Melbourne Water	Yarra Ranges Shire	Yes	Yes	No	VegLink

These sites meet your requirements using alternative arrangements for general offsets.

Credit Site ID	GHU	LT	CMA	LGA	Land owner	Trader	Fixed price	Broker(s)
----------------	-----	----	-----	-----	------------	--------	-------------	-----------

There are no sites listed in the Native Vegetation Credit Register that meet your offset requirements when applying the alternative arrangements as listed in section 11.2 of the Guidelines for the removal, destruction or lopping of native vegetation.

These potential sites are not yet available, land owners may finalise them once a buyer is confirmed.

Credit Site ID	GHU	LT	CMA	LGA	Land owner	Trader	Fixed price	Broker(s)
VC_CFL-3746_01	4.050	467	Melbourne Water	Macedon Ranges Shire	Yes	Yes	No	VegLink

LT - Large Trees

CMA - Catchment Management Authority

LGA - Municipal District or Local Government Authority

Next steps

If applying for approval to remove native vegetation

Attach this report to an application to remove native vegetation as evidence that your offset requirement is currently available.

If you have approval to remove native vegetation

Below are the contact details for all brokers. Contact the broker(s) listed for the credit site(s) that meet your offset requirements. These are shown in the above tables. If more than one broker or site is listed, you should get more than one quote before deciding which offset to secure.

Broker contact details

Broker Abbreviation	Broker Name	Phone	Email	Website
Abezco	Abzeco Pty. Ltd.	(03) 9431 5444	offsets@abzeco.com.au	www.abzeco.com.au
Baw Baw SC	Baw Baw Shire Council	(03) 5624 2411	bawbaw@bawbawshire.vic.gov.au	www.bawbawshire.vic.gov.au
Bio Offsets	Biodiversity Offsets Victoria	0452 161 013	info@offsetsvictoria.com.au	www.offsetsvictoria.com.au
Contact NVOR	Native Vegetation Offset Register	136 186	nativevegetation.offsetregister@delwp.vic.gov.au	www.environment.vic.gov.au/native-vegetation
Ecocentric	Ecocentric Environmental Consulting	0410 564 139	ecocentric@me.com	Not available
Ethos	Ethos NRM Pty Ltd	(03) 5153 0037	offsets@ethosnrm.com.au	www.ethosnrm.com.au
Nillumbik SC	Nillumbik Shire Council	(03) 9433 3316	offsets@nillumbik.vic.gov.au	www.nillumbik.vic.gov.au
TFN	Trust for Nature	8631 5888	offsets@tfn.org.au	www.trustfornature.org.au
VegLink	Vegetation Link Pty Ltd	(03) 8578 4250 or 1300 834 546	offsets@vegetationlink.com.au	www.vegetationlink.com.au
Yarra Ranges SC	Yarra Ranges Shire Council	1300 368 333	biodiversityoffsets@yarraranges.vic.gov.au	www.yarraranges.vic.gov.au

© The State of Victoria Department of Energy, Environment and Climate Action 2024



This work is licensed under a Creative Commons Attribution 4.0 International licence. You are free to re-use the work under that licence, on the condition that you

credit the State of Victoria as author. The licence does not apply to any images, photographs or branding, including the Victorian Coat of Arms, the Victorian Government logo and the Department of Energy, Environment and Climate Action (DEECA) logo. To view a copy of this licence, visit <http://creativecommons.org/licenses/by/4.0/>

For more information contact the DEECA Customer Service Centre 136 186 or the Native Vegetation Credit Register at nativevegetation.offsetregister@delwp.vic.gov.au

Disclaimer

This publication may be of assistance to you but the State of Victoria and its employees do not guarantee that the publication is without flaw of any kind or is wholly appropriate for your particular purposes and therefore disclaims all liability for any error, loss or other consequence which may arise from you relying on any information in this publication.

Obtaining this publication does not guarantee that the credits shown will be available in the Native Vegetation Credit Register either now or at a later time when a purchase of native vegetation credits is planned.

Notwithstanding anything else contained in this publication, you must ensure that you comply with all relevant laws, legislation, awards or orders and that you obtain and comply with all permits, approvals and the like that affect, are applicable or are necessary to undertake any action to remove, lop or destroy or otherwise deal with any native vegetation or that apply to matters within the scope of Clauses 52.16 or 52.17 of the Victoria Planning Provisions and Victorian planning schemes

Pathway Option 2a

Report of available native vegetation credits

This report lists native vegetation credits available to purchase through the Native Vegetation Credit Register.

This report is **not evidence** that an offset has been secured. An offset is only secured when the units have been purchased and allocated to a permit or other approval and an allocated credit extract is provided by the Native Vegetation Credit Register.

Date and time: 21/06/2024 10:09

Report ID: 24963

What was searched for?

General offset

General habitat units	Strategic biodiversity value	Large trees	Vicinity (Catchment Management Authority or Municipal district)	
1.198	0.703	0	CMA	Melbourne Water
			or LGA	Mornington Peninsula Shire

Details of available native vegetation credits on 21 June 2024 10:09

These sites meet your requirements for general offsets.

Credit Site ID	GHU	LT	CMA	LGA	Land owner	Trader	Fixed price	Broker(s)
BBA-0277	2.309	440	Melbourne Water	Mornington Peninsula Shire	No	Yes	No	Abezco, Ethos, VegLink
BBA-0670	16.212	106	Melbourne Water	Cardinia Shire	No	Yes	No	Abezco, VegLink
BBA-0677	7.235	1315	Melbourne Water	Whittlesea City	No	Yes	No	Abezco, VegLink
BBA-0678	42.413	2533	Melbourne Water	Nillumbik Shire	No	Yes	No	VegLink
BBA-0931	1.258	0	Melbourne Water	Moorabool Shire	No	Yes	No	VegLink
BBA-2870	1.520	241	Melbourne Water	Yarra Ranges Shire	Yes	Yes	No	VegLink
BBA-2871	11.560	1143	Melbourne Water	Yarra Ranges Shire	Yes	Yes	No	VegLink
BBA-3017_02	1.984	0	Melbourne Water	Greater Geelong City	No	Yes	No	VegLink
TFN-C1763_3	9.822	0	Melbourne Water	Mornington Peninsula Shire	Yes	Yes	No	Ecocentric, VegLink
VC_CFL-3682_01	1.834	0	Melbourne Water	Nillumbik Shire	Yes	Yes	No	Abezco
VC_CFL-3710_01	6.300	322	Melbourne Water	Yarra Ranges Shire	Yes	Yes	No	VegLink
VC_CFL-3764_01	4.400	0	Melbourne Water	Yarra Ranges Shire	Yes	Yes	No	VegLink

These sites meet your requirements using alternative arrangements for general offsets.

Credit Site ID	GHU	LT	CMA	LGA	Land owner	Trader	Fixed price	Broker(s)
----------------	-----	----	-----	-----	------------	--------	-------------	-----------

There are no sites listed in the Native Vegetation Credit Register that meet your offset requirements when applying the alternative arrangements as listed in section 11.2 of the Guidelines for the removal, destruction or lopping of native vegetation.

These potential sites are not yet available, land owners may finalise them once a buyer is confirmed.

Credit Site ID	GHU	LT	CMA	LGA	Land owner	Trader	Fixed price	Broker(s)
VC_CFL-3746_01	3.242	315	Melbourne Water	Macedon Ranges Shire	Yes	Yes	No	VegLink

LT - Large Trees

CMA - Catchment Management Authority

LGA - Municipal District or Local Government Authority

Next steps

If applying for approval to remove native vegetation

Attach this report to an application to remove native vegetation as evidence that your offset requirement is currently available.

If you have approval to remove native vegetation

Below are the contact details for all brokers. Contact the broker(s) listed for the credit site(s) that meet your offset requirements. These are shown in the above tables. If more than one broker or site is listed, you should get more than one quote before deciding which offset to secure.

Broker contact details

Broker Abbreviation	Broker Name	Phone	Email	Website
Abezco	Abzeco Pty. Ltd.	(03) 9431 5444	offsets@abzeco.com.au	www.abzeco.com.au
Baw Baw SC	Baw Baw Shire Council	(03) 5624 2411	bawbaw@bawbawshire.vic.gov.au	www.bawbawshire.vic.gov.au
Bio Offsets	Biodiversity Offsets Victoria	0452 161 013	info@offsetsvictoria.com.au	www.offsetsvictoria.com.au
Contact NVOR	Native Vegetation Offset Register	136 186	nativevegetation.offsetregister@delwp.vic.gov.au	www.environment.vic.gov.au/native-vegetation
Ecocentric	Ecocentric Environmental Consulting	0410 564 139	ecocentric@me.com	Not available
Ethos	Ethos NRM Pty Ltd	(03) 5153 0037	offsets@ethosnrm.com.au	www.ethosnrm.com.au
Nillumbik SC	Nillumbik Shire Council	(03) 9433 3316	offsets@nillumbik.vic.gov.au	www.nillumbik.vic.gov.au
TFN	Trust for Nature	8631 5888	offsets@tfn.org.au	www.trustfornature.org.au
VegLink	Vegetation Link Pty Ltd	(03) 8578 4250 or 1300 834 546	offsets@vegetationlink.com.au	www.vegetationlink.com.au
Yarra Ranges SC	Yarra Ranges Shire Council	1300 368 333	biodiversityoffsets@yarraranges.vic.gov.au	www.yarraranges.vic.gov.au

© The State of Victoria Department of Energy, Environment and Climate Action 2024



This work is licensed under a Creative Commons Attribution 4.0 International licence. You are free to re-use the work under that licence, on the condition that you

credit the State of Victoria as author. The licence does not apply to any images, photographs or branding, including the Victorian Coat of Arms, the Victorian Government logo and the Department of Energy, Environment and Climate Action (DEECA) logo. To view a copy of this licence, visit <http://creativecommons.org/licenses/by/4.0/>

For more information contact the DEECA Customer Service Centre 136 186 or the Native Vegetation Credit Register at nativevegetation.offsetregister@delwp.vic.gov.au

Disclaimer

This publication may be of assistance to you but the State of Victoria and its employees do not guarantee that the publication is without flaw of any kind or is wholly appropriate for your particular purposes and therefore disclaims all liability for any error, loss or other consequence which may arise from you relying on any information in this publication.

Obtaining this publication does not guarantee that the credits shown will be available in the Native Vegetation Credit Register either now or at a later time when a purchase of native vegetation credits is planned.

Notwithstanding anything else contained in this publication, you must ensure that you comply with all relevant laws, legislation, awards or orders and that you obtain and comply with all permits, approvals and the like that affect, are applicable or are necessary to undertake any action to remove, lop or destroy or otherwise deal with any native vegetation or that apply to matters within the scope of Clauses 52.16 or 52.17 of the Victoria Planning Provisions and Victorian planning schemes